

Biopsy Needle Guides for ALPINION



- Integral design without any accessories
- High grade medical stainless steel
- Artificial polishing
- Supporting accurate and angle adjustable biopsy
- Matching a wide range of needle gauges
- Simple pressing, quick release



About Us

As a China national high-tech enterprise, InnoFine are dedicated to R&D, manufacturing and sales ultrasound interventional products and consumables medical products since its establishment in 2013, providing safe and reliable, cost-effective products and overall solutions for thousands of hospitals in more than 100 countries around the world, products covering Ultrasound Needle Guides, Probe Cover, Gel, Biopsy Needle etc.

InnoFine will continue to adhere to the spirit of "Be innovative and forge ahead, Strive for excellence and perfection, Customer oriented ", and make unremitting efforts to promote the development of global interventional ultrasound field.

Cooperation Ultrasound Brand (Part)

Reference Sites (Part)

 Mount Elizabeth Novena Hospital, Singapore	 Apollo Hospitals, India	 Semmelweis University Medical Center, Hungary	 Kinderwunschzentrum Heidelberg, Germany	 Orchid Fertility, UAE
 Chinese PLA General Hospital	 Peking Union Medical College Hospital	 West China Hospital Sichuan University	 Shengjing Hospital China Medical University	 Tongji Hospital, Huazhong University of Science and Technology
 Shanghai Ninth People's Hospital	 Xiangya Hospital Central South University	 The First Affiliated Hospital Sun Yat-sen University	 Shenzhen People's Hospital	 Shenzhen Hospital Peking University

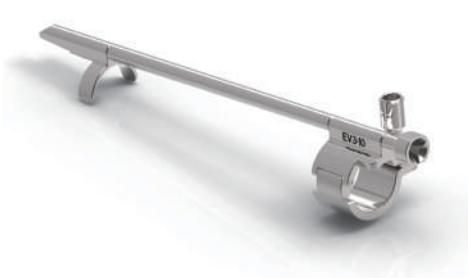
Classial Product (Part)



Biopsy needle guides for ALPINION
EN3-10 probe (Endocavity type probe)



Biopsy needle guides for ALPINION
E3-10H probe (Transvaginal type probe)



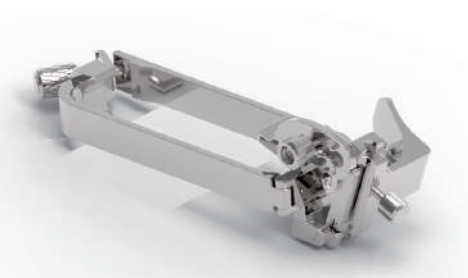
Biopsy needle guides for ALPINION
EV3-10 probe (Endocavity type probe)



Biopsy needle guides for ALPINION
L3-12 probe (Linear type probe)



Biopsy needle guides for ALPINION
C1-6 probe (Convex type probe)



Biopsy needle guides for ALPINION
SC1-4H probe (Convex type probe)

Accurate, Safe and Efficient Operation



· Attach



· Angle Adjustment



· Needle Insertion



· Detach

List of Biopsy Needle Guides for **ALPINION**

MODEL	Transducer	Transducer Type	Gauge Size/Guide Channel Length
JSM-159	SC1-4H, C1-6, C1-6T, C1-6i, C1-6CT, SC1-6, SC1-6H	Convex	11-23G/3.5cm
JSM-143	L3-12, L3-12T, L3-12i, L3-12H	Linear	11-23G/3.5cm
JSM-199	L3-12X, L8-17X	Linear	11-23G/3.5cm
JEM-027	EN3-10	Endocavity	16-18G/15cm
JEM-030	E3-10, E3-10H	Endocavity	16-18G/15.5cm
JEM-033	EC3-10, EV3-10, EC3-10H, EC3-10X, EV3-10H, EC3-10T, EV3-10T, EV3-10X	Endocavity	16-18G/15.5cm
JEM-095	EV2-11H, EC2-11H	Endocavity	16-18G/13cm

(Please contact InnoFine for more models.)